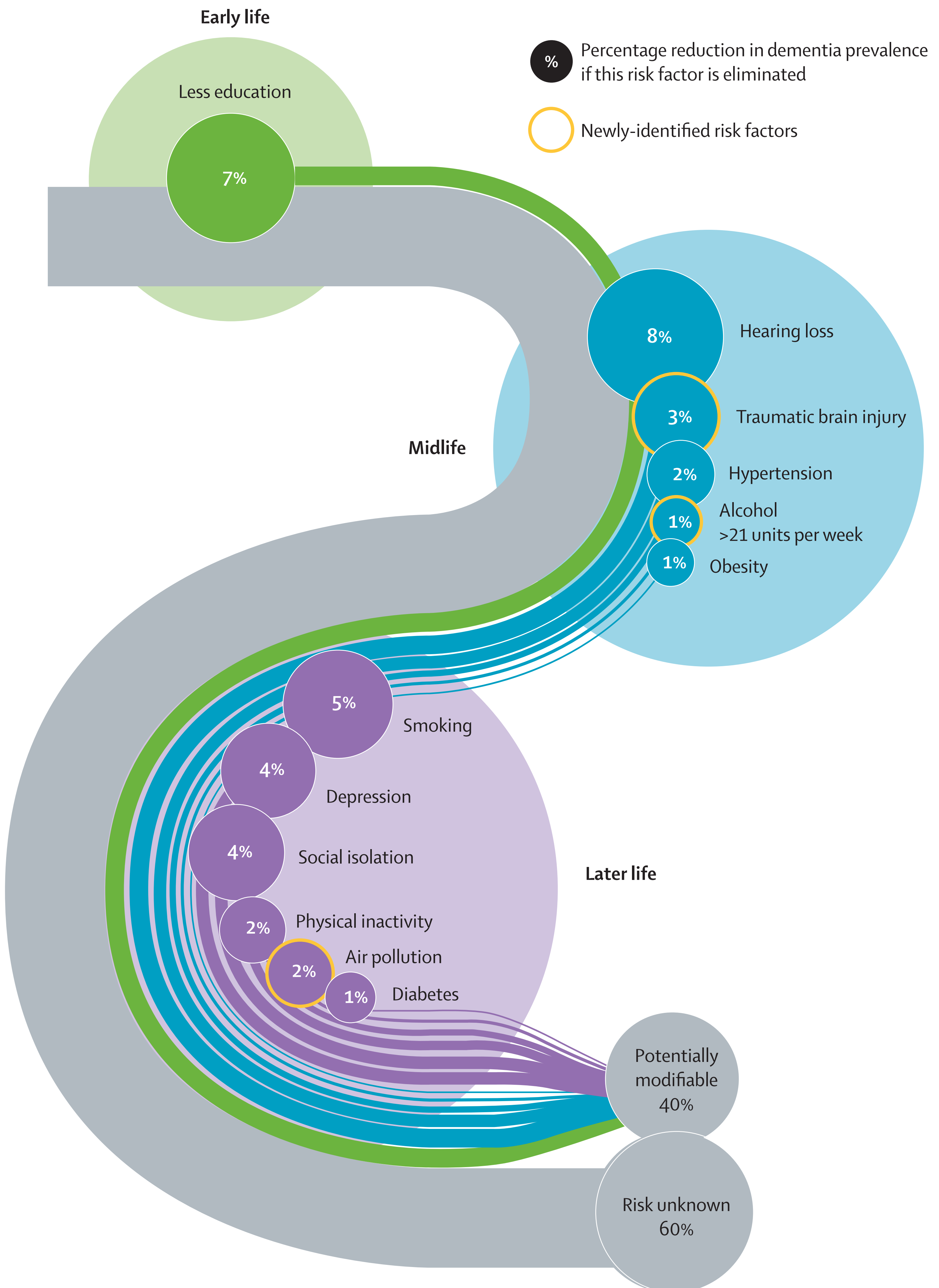


Risk factors for dementia

An update to the *Lancet* Commission on Dementia prevention, intervention, and care presents a life-course model showing that 12 potentially modifiable risk factors account for around 40% of worldwide dementias



Livingston G, Huntley J, Sommerlad A, et al. Dementia prevention, intervention, and care: 2020 report of the *Lancet* Commission. *The Lancet* 2020.